

PRODUCT INFORMATION

TRMP

Pneumatic Rear Mirror



With decades of experience, Schaltbau France offers a wide range of customer-specific solutions dedicated to the railway market.

With their extremely rugged design, high dust and dirt resistance and shockproof housings, TRMP mirrors are designed to ensure increased visibility, safety and reliability.

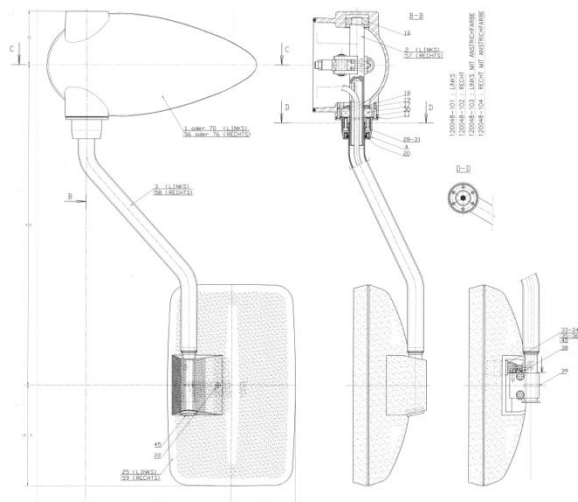
Features:

- Powered mirror
- Heatable
- Foldable (pneumatic actuator)
- Customer-specific design

Applications:

- Locomotives
- Multiple Units

Dimensions & Diagrams



Technical Data

Folding technology	Pneumatic
Shock & Vibration resistance	Cat.1, Class A (EN 61373)
Housing	Aluminium, steel
Actuator supply	10 bars
Ambient air temperature range T_U	-50°C ... +70°C
Mirror's radius (typical)	From 300mm (1800mm)
W x h dimensions (typical)	On request (366mm x 176mm)
Heater voltage (typical)	On request (24VDC)