

## PRODUCT INFORMATION

# TRME

Electrical Rear Mirror  
for Railway Applications



With decades of experience, Schaltbau France offers many customer specific solutions dedicated to the railway market.

With their extremely rugged design, high dust and dirt resistance and shock proof housings, TRME mirrors are designed to ensure increased visibility, safety and reliability.

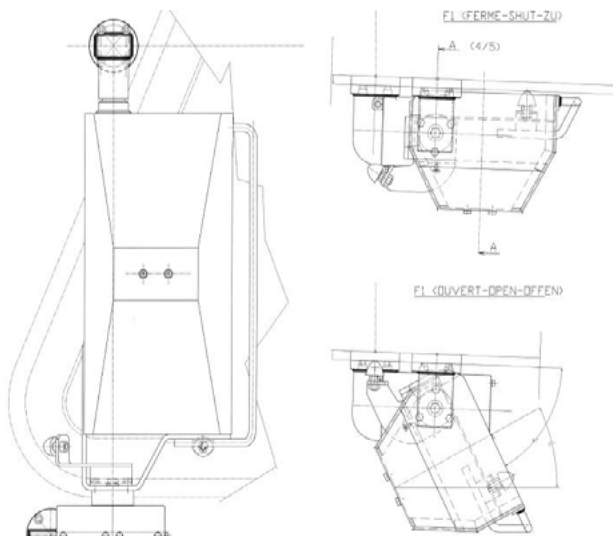
### Features:

- Powered mirror
- Heatable
- Foldable (electric actuator)
- Customer specific design

### Applications:

- Locomotives
- Multiple Units (EMUs and DMUs)

## Dimension diagram



Dimensions in mm

## Specifications

Series	TRME
Folding technology	Electric
Shock/vibration	Cat.1, Class A (EN 61373)
Housing	Aluminum, Steel
Actuator's supply	24 V DC
Ambient air temperature range $T_u$	-50° C ... +70° C
Mirror's radius, (typically)	300mm min. (1800mm)
Dimensions, w x h (typically)	Upon request (366mm x 176mm)
Heater's voltage, (typically)	Upon request (24 V DC)